

DocHouse\BRM **Pump**

The universal tool for data integration and data analysis



picture: stock.xchng/Carl Dwyer

Whether if you want to integrate data from different application systems in DocHouse\BRM or other Notes, prepare reporting via Excel, analyse or visualise data with Infozoom, migrate from a third-part system or just prepare an export or import for different systems, DocHouse\BRM **Pump** can do all these tasks.

Data integration

DocHouse\BRM **Pump** connects your Lotus Domino System with external data bases and applications. You can adjust (also export and import) data from the DocHouse\BRM data base and also from other Notes data bases with third-part systems. Complex computations and recoding can be made.

Connectors

With DocHouse\BRM **Pump** you have access to any system. There are connectors for Lotus Notes/Domino ASII, ODBC, XML, Microsoft Word and the Business Intelligence solution InfoZoom.

Analysing and reporting

With DocHouse\BRM **Pump** you supply your employees with analyses and figures. So you can collect data from different sources, consolidate and distribute the result via the DocHouse\BRM **Pump Portal** to predefined employees or send it periodically via email. You can also transfer the data into DocHouse\BRM documents and file it to a customer.

Analysing and visualising

DocHouse\BRM **Pump** has a bidirectional connector to the Business Intelligence solution InfoZoom. With Info DocHouse\BRM **Pump** you get a great tool for data analysis and data visualisation. You can consolidate and adjust data bases and write them back to DocHouse\BRM.

Migrate

With DocHouse\BRM **Pump** you have a perfect tool to migrate from another CRM solution (based on Lotus Notes or SQL) to DocHouse. Via DocHouse\BRM **Pump** data from older systems can be transferred to DocHouse\BRM.

DocHouse\BRM Functions

Connector technology

Many data sources and data targets of different kinds can be handled with the DocHouse\BRM **Pump** connector technology. You can arbitrarily shuffle here the data types .

All Lotus Notes field types (text, number, date, Rich-text, authors, reader,...) are supported. The assignment of source or targets fields is freely definable.

Following connectors are currently available:

- Notes / DocHouse
- ASCII
- ODBC
- XML
- Excel / Word
- InfoZoom Viewer
- InfoZoom
- PDF
- Serial E-Mail

Notes / DocHouse\BRM-Connector

An intelligent update of data in Notes/DocHouse\BRM documents is possible on field level. This reduces the replication conflict and the data volume at replications.

Relational data sets are supported in Lotus Notes documents.

ODBC Connector

With the ODBC Connector any relational data base, which offer an ODBC interface, can be read or written in this. Freely definable SQL queries can be used here.

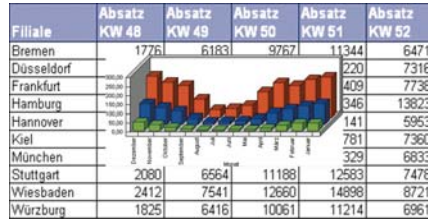
InfoZoom connector

Data can be delivered with the InfoZoom-Viewer-Connector to Infozoom and evaluated. The InfoZoom-Connectors allows

additionally to write back data from InfoZoom. The changed data fields can be written in data targets of different types. The selected data sets from InfoZoom can be moved to another folder.

Excel Connector

You can create with the Excel Connector complex analyses with Excel Templates of any data sources.



Programming

DocHouse\BRM **Pump** can be flexibly programmed and configured. At the reduction of data sets a program logic can be created under the use of @formula and LotusScript. Through the linking of job lists with different configurations, different interfaces can take place in a defined order.

Automating

Analyses can be started time controlled with the DocHouse\BRM **Pump Scheduler** and the results can be sent via email as Excel, ASCII or XML file or can be made available for the end-user in DocHouse\BRM **Pump Portal**.

Technical information:

- Executable from Lotus Domino version 4.6x server and Lotus Notes 5.x Client under all Domino server platforms.
- Easy configuration in a Lotus Notes data base.
- Extensive protocol functions with statistic and notification via email.

- Fault notification to the administrator.
- Easy installation as Domino Server
- Agent in a Notes data base.
- Also locally executable.

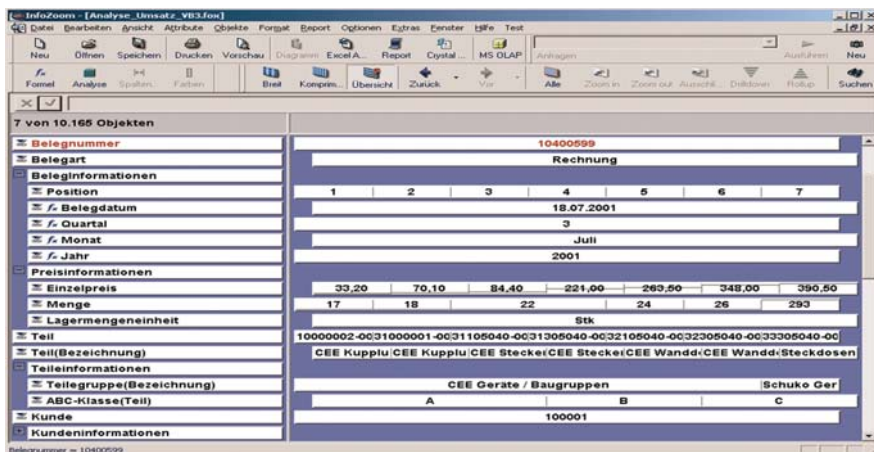
Licensing

DocHouse\BRM **Pump** basis license consists of:

- DocHouse\BRM **Pump**
- Connector Notes with DocHouse\BRM Templates
- Connector ODBC
- Connector ASCII
- Connector XML
- Connector InfoZoom Viewer
- 2 user licenses

Optional extensions:

- Connector InfoZoom
- Connector PDF
- Connector MS Office
- Connector Serial Email
- User licenses



Ready for
IBM | Lotus.
software

IBM
Premier
Business
Partner

KUMA soft
Business Relationship Management

KUMatronik Software GmbH
Hähnlehofstraße 5
88250 Weingarten
Germany
Phone +49 751 560926-0
vertrieb@kumasoft.de
www.kumasoft.de